

Workshop on active management of forest protected areas

Mikulov, 1st – 5th August 2016

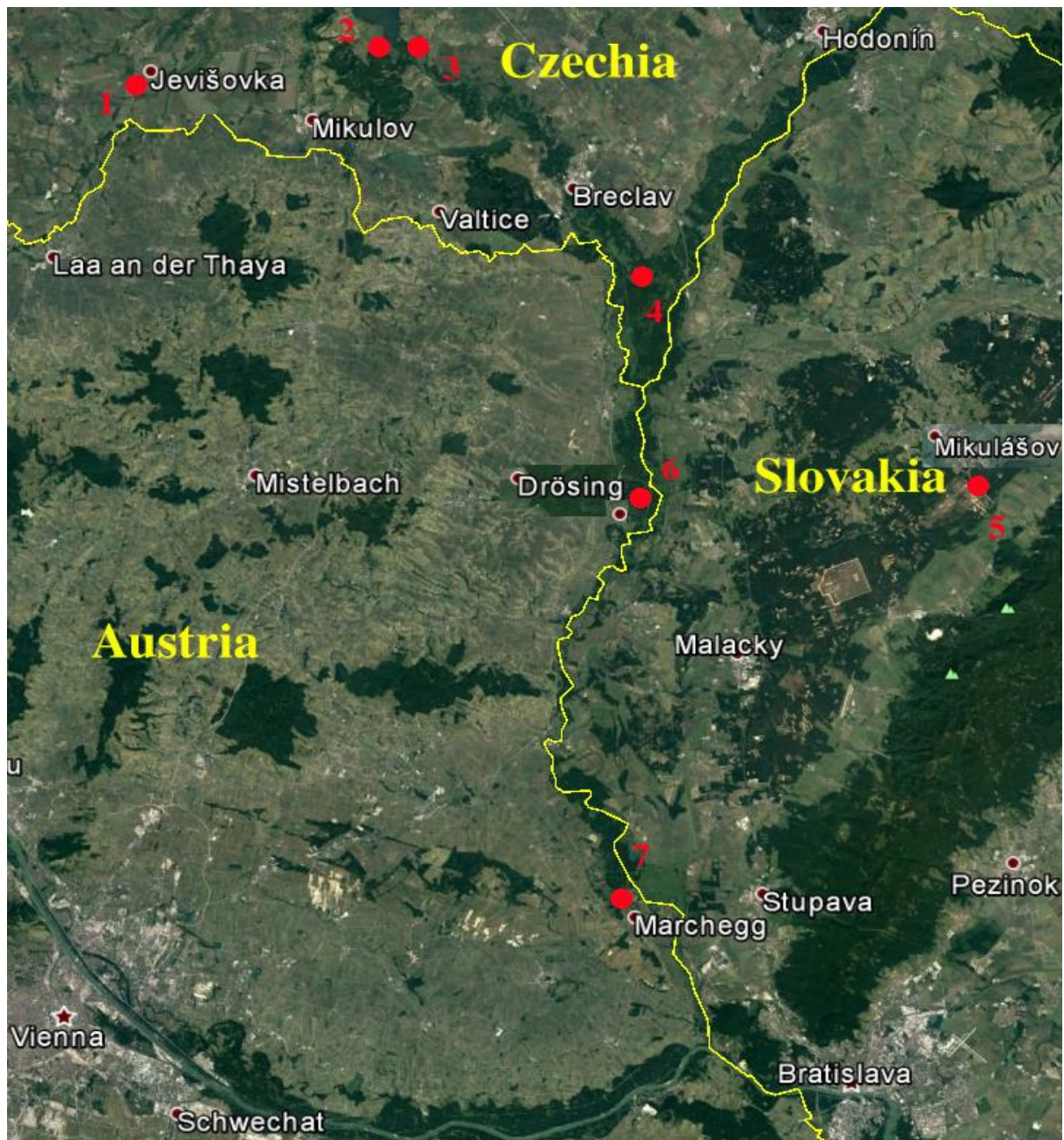
FIELD TRIPS

Lukas Cizek



Foto(c) Jan Miklín (www.janmiklin.cz)

MAP – workshop excursions



- 1 – Willow pollards near Jevišovka
- 2 – Coppice with standards recently restored on Děvín hill
- 3 – Křivé jezero – parkland and pollarding restoration in wooded wetland
- 4 – Floodplains of Soutok game reserve - hands-off reserves and commercial forestry
- 5 – Fire affected woodlands on missile shooting ground near Mikulášov
- 6 – Traditional communal coppice with standards near Drösing
- 7 – WWF reserve Marchegg – restoration of coppicing and grazing in floodplain

1 - Willow pollards near Jevišovka

More than 20 ha of meadows with willow pollards in floodplain of Jevišovka river owned and managed by a village of the same name. The village is inhabited mainly by Croatians who came in 16th century.

The pollards served as source of firewood, while the grass was grazed and moved. The municipality takes very good care of the pollards, this is probably best managed pollards' stand in the country. The expansion of reeds into former wooded meadows is currently the main problem.

The willow pollards offer many hollows and are home to surprisingly diverse fauna of saproxylic beetles, including e.g. the hermit beetle (*Osmoderma barnabita*) protected by EU as priority species. The ponds and pools are inhabited by e.g. the European fire-bellied toad (*Bombina bombina*), and highly endangered crustaceans tadpole shrimp (*Triops cancriformis*) or clam shrimp (*Leptestheria dahalacensis*).





(c) Jan Miklín (www.janmiklin.cz)

2 – Děvín hill in Pálava protected landscape area (PLA)

Limestone hill of Pálava PLA host some of the most important Pannonian stepic grasslands, but are also home to sparse oak woodlands and formerly coppiced forests dominated by oak and hornbeam. Administration of the PLA re-introduced coppicing after nearly seven decades in order to restore open forests.

More info by **Radim Hédli** and **Vladan Riedl**.



(c) <http://palava.ochranaprirody.cz/>



(c) Jan Miklín (www.janmiklin.cz)

3 – Křivé jezero National Nature Reserve

The only wet part of Pálava Protected Landscape Area, and the last remain of formerly large complex of floodplain woodlands and meadows flooded after construction reservoirs on Dyje (Thaya) river in 1970s and 1980s. The reserve include several oxbow lakes, meadows and forests. Administration of the PLA re-introduced pollarding and thinned some stands in order to restore the parkland landscape.

The reserve is home to numerous wetland and woodland species including, e.g. white tailed eagle (*Aquila albicilla*), purple heron (*Ardea purpurea*), and summer snowflake (*Leucojum aestivum*).



(c) Jan Miklín (www.janmiklin.cz)

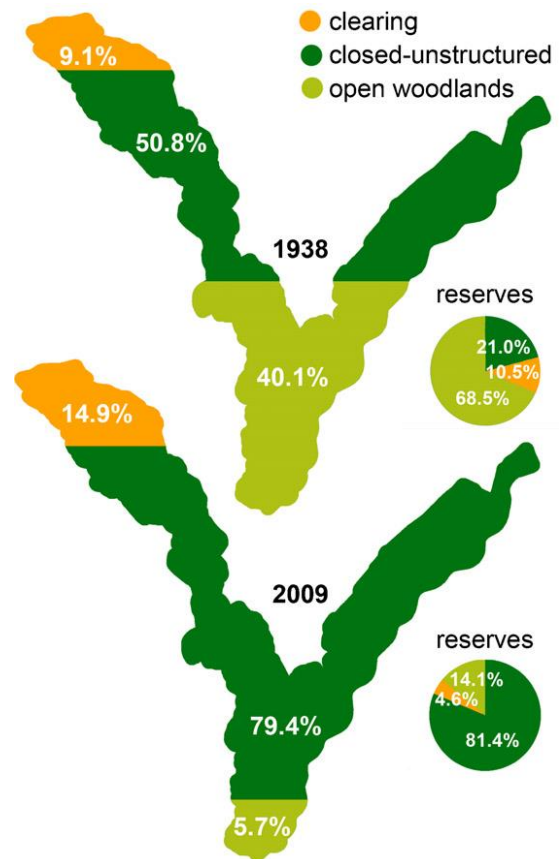
4 – Floodplains of Soutok game reserve - hands-off reserves and commercial forestry

Pannonian, alluvial woodlands and meadows along the lower Morava (March) and Dyje (Thaya) rivers cover 14,630 ha. It is a biodiversity hot-spot for numerous taxa associated with open woodlands, veteran trees, and wetlands. The prevailing trees are pedunculate oak (*Quercus robur*), narrowleaf ash (*Fraxinus angustifolia*), hornbeam (*Carpinus betulus*), and field maple (*Acer campestre*).

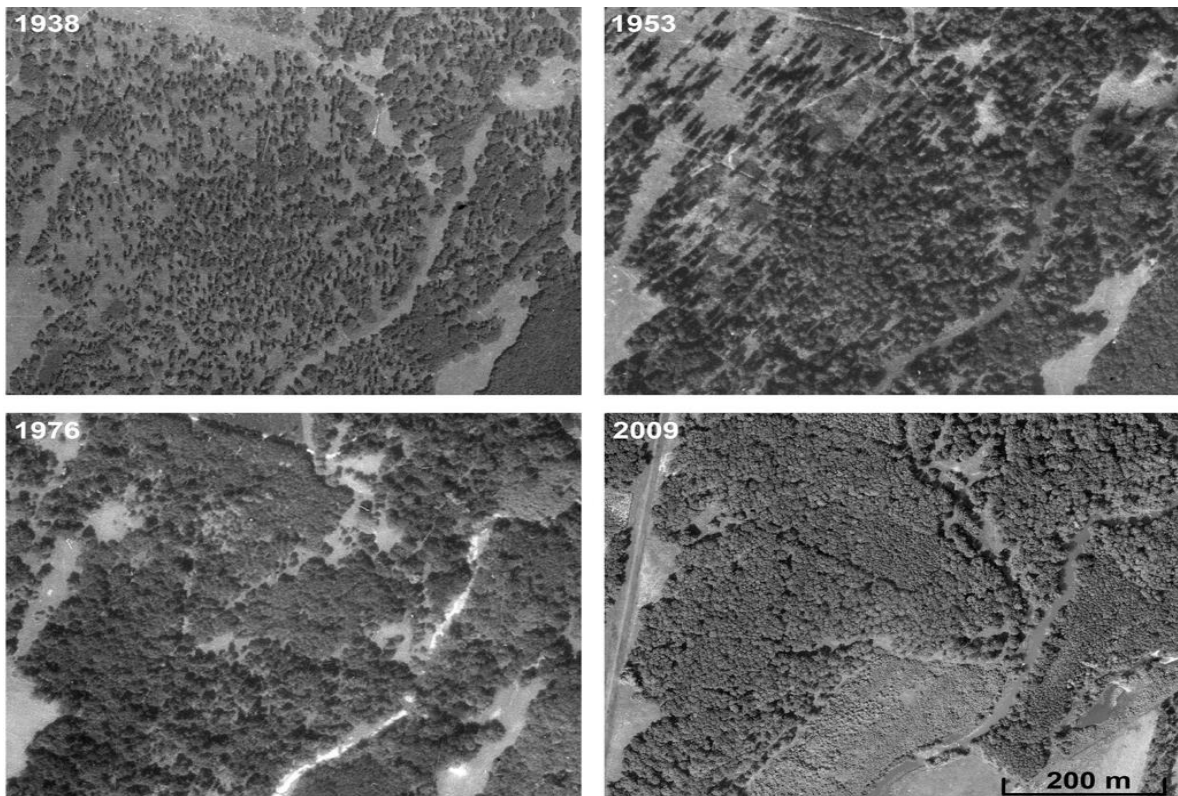
The main traditional managements such as woodland pasture, coppicing with standards, and pollarding were abandoned 150–60 years ago in favour of growing planted forests with 90–150 year rotation. Today, the area comprises a mosaic of commercial oak/ash plantations, with a prevailing rotation period of 140/110 years, managed using ≤ 2 ha clear-cuts; and fragments of open and formerly openwoodlands and meadows with old (>150 years) trees, mainly oaks.

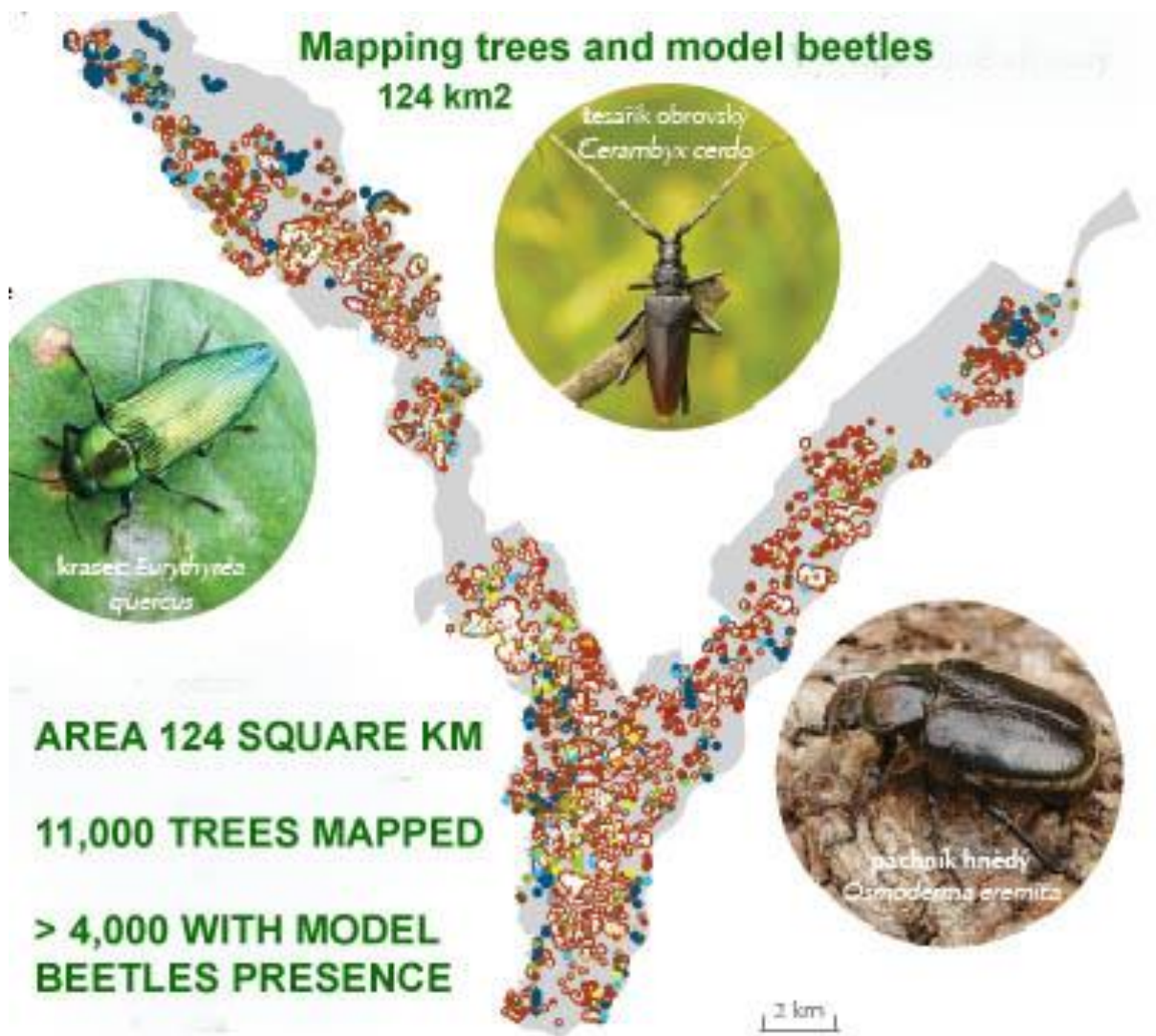


Management changes lead to substantial changes in land cover of the area. Aerial photographs reveal rapid decrease of open woodlands (light green), and increase of closed canopy woodlands (dark green) and clearings (orange) between 1938 and 2009. as is given for the whole target area (blind maps) and for reserves(circles)



Example of gradual increase in canopy closure of 50 ha of an oak woodland over the past seventy years. Open forest prevailed in 1938, then semi-open forestand structured forest covered most of the area depicted in 1953 and 1976, while closed-canopy forest prevailed in 2009.





http://baloun.entu.cas.cz/~cizek/BeetlesNatura2000_MoravaDyjeFloodplain_DistributionMaps/

<https://kfgg.maps.arcgis.com/apps/webappviewer/index.html?id=6417b9feafa04c1c9d3d357e366c3c92>

5 – Fire affected woodlands on missile shooting ground near Mikulášov

Záhorie Protected Landscape Area covers floodplains on the east bank of Morava River and large continental sands of Záhorská lowland. The sands are mostly covered by pine plantations, large open areas and open oak woodlands remain mainly in areas affected by fires caused by explosions of live ammunition.

LIFE project „Restoration and management of sand dune habitats in Záhorie the military training area was carried out in cooperation with Slovakian army.



Info will be presented by **Tomáš Olšovský** from Záhorie PLA administration



(c) Project LIFE 2006NAT/SK/000115

6 – Traditional communal coppice with standards near Drösing

About 900 ha of coppice with standards forest in the floodplain of Morava River owned and managed by people from Drösing. The ownership is shared, guided by complex rules originating in middle ages. The rotation of coppice is 40 years, the standard trees are cut in age of 80-120 years. The harvested wood serves for heating of the whole village.



7 – WWF reserve Marchegg – restoration of coppicing and grazing in floodplain
Full info will be given by **Manuel Denner** and **Gerhard Egger**.



(c) WWF Austria



(c) Jan Miklín (www.janmiklin.cz)